

Overview

FC-702C is a wired or wireless compact ultrasonic water meter which is composed of valve, ultra power communication module, ultrasonic flow meter calculator.



Features

- Accurate measurements, wide range ratio, drip metering
- Integrated structure for the straight pipe sections, forging craft manufacture, the material is forged brass
- High quality piezoelectric ceramic transducer, ensure high accuracy and stability
- No moving part, no wear, no interference by impurities in the medium, chemical, and magnetic material
- Single button design, simple operation
- Integrated low-power, high-performance LoRaWAN module, and complies with the LoRaWAN™ Class A \ C application standard.
- Supporting EU433 \ CN470 \ EU868 \ US915 \ AU915 \ AS923, etc.,
- Comply with MID, OIML and CE technical requirement

Technical Specification

* Range ratio: R250

Model	Nominal diameter	Common flow	Boundary flow	Minimum flow	Starting flow	Interface size of flow sensor		Interface size of flow sensor			Body length (mm)
	DN(mm)	Q ₃ (m ³ /h)	Q ₂ (m ³ /h)	Q ₁ (m ³ /h)	(L/h)	Thread length (mm)	Interface thread	Interface length	Thread length	Thread specification	
DN15	15	2.5	0.016	0.010	0.0050	10	G _{3/4} B	43	15	R _{1/2}	165
DN20	20	3.0	0.020	0.012	0.0006	12	G1B	50	16	R _{3/4}	195
DN25	25	6.0	0.040	0.024	0.0120	12	G1 _{1/4} B	58	18	R1	225
DN40	40	10	0.064	0.040	0.0200	13	G2B	59	22	R1 _{1/2}	200

*Range ratio: R250

Model	Nominal diameter	Common flow	Boundary flow	Minimum flow	Flange outer diameter	Body length	Connecting bolt
	DN(mm)	Q ₃ (m ³ /h)	Q ₂ (m ³ /h)	Q ₁ (m ³ /h)	(mm)	(mm)	/
DN50	50	25	0.16	0.100	165	200	4*M16
DN80	80	63	0.40	0.252	200	225	8*M16
DN100	100	100	0.64	0.400	220	250	8*M16
DN150	150	250	1.60	1.000	285	300	8*M16
DN200	200	400	2.56	1.600	340	350	12*M16
DN400	400	1600	10.25	6.400	580	600	16*M16

Other Products (Range ratio: R200-400)



Figure 1



Figure 2



Figure 3



Figure 4

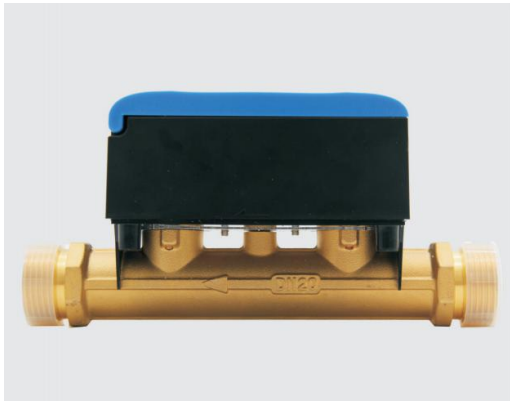


Figure 5



Figure 6



Figure 7



Figure 8

Friendcom

Shenzhen Friendcom Technology Co.,Ltd.


6th Floor, 17 Building, Guangqian Industrial Park, Xili Town,
Nanshan District, Shenzhen, 518055, China

Tel: +86-755-86026600

+86-755- 23230320

Fax: +86-755-86026300

Email: sales@friendcom.com

 www.friendcom.com